



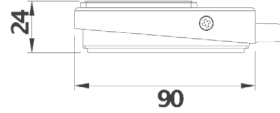
- ▶ **Compact and robust construction**
- ▶ **Colour options available upon request**
- ▶ **Temperature range: -10°C...+40°C**

Specifications	
Standards/approvals	N/A
Connection method	complete with 2m tube (black) with 3mm I/D 3mm I/D & 6mm O/D, which are available in different length
Electrical rating	n / a
Pressure range	Works with 6871, 6872, 6773, 6753, 6891, 6893, 6861, 6862, 6863, 6864, 6869 - dependent on tube length
Electrical rating	N/A
Contact configuration	N/A
Operating temperature range	-10°C to +40°C
Body material	16 SWG mild steel, powder coat grey hammertone
Weight	0.25 kg

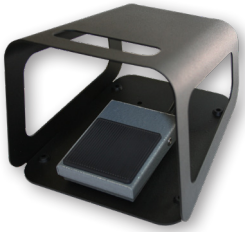
Recommended depression time is 30 seconds, for applications requiring a greater period please contact sales to discuss further.



Dimensions



Accessories



Part Number	Description
6202-0001	Single Black RAL 9005 guard
6202-0002	Single Grey RAL 7035 guard
6202-0003	Twin Grey RAL 7035 guard